



Making real-time surveillance real

Surveillance Solutions
from BT: **Networks**



A surveillance system is only as good as the network connecting it

A fixed, mobile, or wireless network that connects your surveillance cameras to your control room is essential for all real-time surveillance systems. But even when you don't need to see what's going on at the exact moment that it's happening, connecting your cameras to a centralised recording system is vital for post-event investigations. It also stops you losing any data.

With networked cameras you can access your images remotely. And that means you don't have to physically visit each one to collect film or download from an edge recording device, saving travel time and costs, and vehicle maintenance budgets.


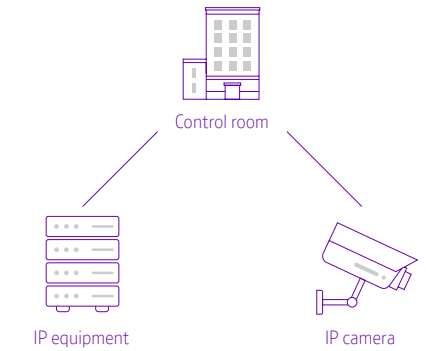
We know that for networks, one size does not fit all. Different situations, local geography, operational demands, and individual budget constraints all inform how we design a network. As part of BT and EE, we're the largest converged, fixed, and mobile network provider in the UK.

And with over 45,000 video channels in the UK, we understand how to design, deliver, and manage resilient networks that will always keep you in the picture.

Networks that put you in the picture

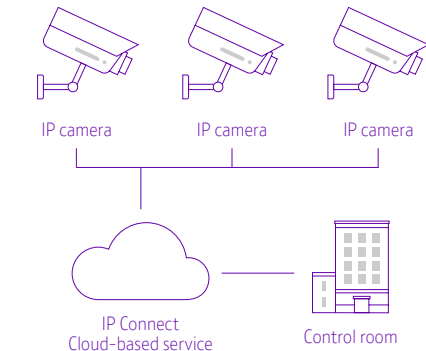
Fixed: fibre point-to-point services

Our exclusive fibre point-to-point transmission services, RS1000 (fibre) and RS1000D (digital), connect the camera from the street direct to the control room with a secure, low-latency, near-broadcast quality, real-time transmission link.

 <p>An analogue camera is connected directly to a control room building.</p>	 <p>A control room is connected to IP equipment, which is then connected to an IP camera.</p>
<p>RS1000</p> <ul style="list-style-type: none">• Fibre-delivered analogue CCTV• High-quality video, voice, telemetry and data transmission• Remote, central, or local access• Low latency and jitter• Round-the-clock helpdesk• Fault fix within 72 hours	<p>RS1000D</p> <ul style="list-style-type: none">• Fibre-delivered IP digital surveillance cameras• High-quality, two-way video, voice, telemetry and data transmission• Remote, central, or local access• Low latency and jitter• Round-the-clock helpdesk• Fault fix within 72 hours

Flexible: IP network

BT IP Connect UK is the UK's market-leading IP VPN (Virtual Private Network) digital cloud-based networking solution.

 <p>Three IP cameras are connected to a cloud-based service, which is then connected to a control room.</p>	<p>BT IP Connect</p> <ul style="list-style-type: none">• Bring all your applications onto a single network• We design, maintain, and manage the network, keeping costs down• Wide range of access speeds and technologies• Flexible speeds so you can match bandwidth to what you need• Watertight security with a CAS(T) Assured and PSN Certified service
---	--

Installation and beyond

Once we've installed your high-quality CCTV transmission network, you're not limited to only using it for cameras. You can also use the infrastructure as the foundation for secure smart city activities, including voice-based help and information points, access control, fire and intruder alarm monitoring, climate and IoT sensors and to provide points-of-presence for blanketing your city with free public Wi-Fi.

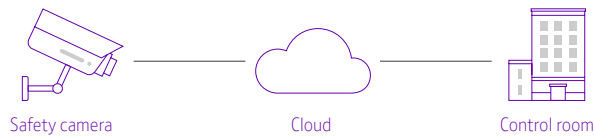
We'll survey your sites and we'll work with you to design a cost-effective network, using multi-channel circuits to reduce costs wherever possible. As well as end-to-end project management, we'll install network termination equipment at both ends of the network cabling.

Fixed: Safety Camera Connect

With wet-film cameras becoming increasingly difficult and costly to maintain, digital (IP-enabled) cameras are the natural replacement. No film to collect and process. No time wasted waiting for the finished image to turn up for analysis. No cameras running out of film. No speeding motorists getting away with it.

Get up to speed with Safety Camera Connect

- Street ADSL with adequate bandwidth to relay still images from road safety cameras
- We provide a fully-managed installation from survey through to connection
- Round-the-clock helpdesk
- Fault fix within 72 hours



But to get the full benefits, you need to link the cameras back to your control centre with a secure high-speed network. Do that and you're looking at significant operational cost savings.

And that's what you'll get with our Safety Camera Connect service.

It's an ADSL (Asymmetric Digital Subscriber Line)-based service that transmits images and data from roadside safety cameras to your termination point or control room. You'll get an instant and secure feed with enough bandwidth to relay still images and their metadata.

High-speed image and data transmission from the street straight to your control room means you don't have to travel to each camera collecting wet-film. That alone can save you driving thousands of miles a year, reducing fuel and maintenance spending. And because your control room gets the images digitally, there's no processing and delivery time.

When your safety camera operation moves this fast, you can slow traffic more effectively, bringing accident rates down and improving road safety.



Wireless

We have a range of un-licensed and low-licensed, point-to-point and point-to-multipoint, Wi-Fi transmission services designed to deliver CCTV images securely to the control room.

All of our wireless solutions are ruggedized and high-performance, delivering a system uptime of at least 99.999 per cent.

- Point-to-point – single cameras.
- Point-to-multipoint – camera hub points.
- Multipoint-to-multipoint (mesh) – blanket camera coverage in outdoor areas.
- High bandwidth backhaul – multiple cameras to control rooms.
- Transmission on the 5–80 GHz spectrum.
- Technology partners include: SMe Siae, Siklu, and Silvernet (over 20,000 units deployed for CCTV across the UK and Ireland).

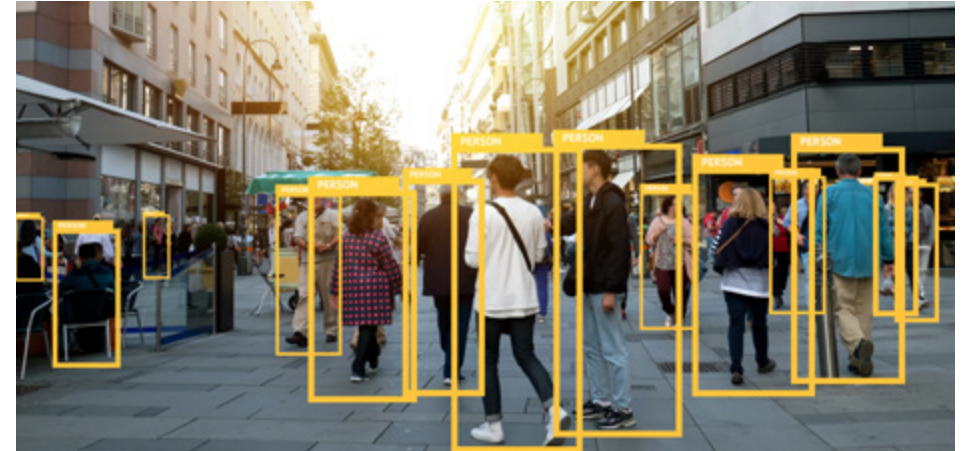
We offer consultancy, surveys, design, installation, and support of hybrid network solutions for CCTV and other associated smart applications.

Mobile

Our Mobile Surveillance portfolio of mobile cameras and surveillance devices uses either the secure EE mobile or BT Wi-fi network as its default connection.



If you're not within range of a BT Wi-fi hotspot, the mobile camera switches to the EE 3G or 4G mobile network for smooth, uninterrupted coverage. Whichever connection your Mobile Surveillance solution uses, you'll get a reliable, encrypted, and resilient real-time video feed straight into the control room (or Mobile Control centre).



A peek inside our portfolio

We know how to integrate technology from numerous world-class suppliers to give you an affordable, best-of-breed solution that does exactly what you need it to.

Command and Control centre

We'll design and plan the layout, erect walls, install screens, cabling, networking, and all the IT equipment, data storage, and video management software you need.

Cameras for all situations

We've got everything from static street cameras to highly portable mobile cameras, on-vehicle cameras to body-worn cameras.

Surveillance camera networks

Point-to-point digital and analogue transmission services for high-quality, low-latency imagery. Hybrid secure MPLS, cloud and wireless networks designed to suit your needs over the length of the UK.

Safety camera networks

An ADSL (Asymmetric Digital Subscriber Line)-based service that transmits images and data from safety cameras to your Command and Control centre.

Mobile surveillance

Apps to live stream high-quality video from local surveillance cameras straight to the smartphone of an operative on the ground and convert smartphones into surveillance cameras.

Convert existing cameras to wireless

IP camera encoders will convert your existing surveillance cameras to wireless, giving you real flexibility.

Why people want to work with us

We're a surveillance solution consultancy

We work with over 1,800 public sector customers. We're present in over 80 per cent of the UK's public authority control rooms. We connect over 44,000 CCTV/video channels to control rooms. Our networks carry over half a million images a second – that's 43 billion a day. Every day.

Trust us, we know what we're doing. And what do we do? Everything.

Design

We don't sell you an off-the-shelf solution. We'll work with you to figure out how we can help you meet your challenges. And we'll also come up with some ideas that you may not have thought of.

Supply

Different surveillance scenarios demand different cameras. We've got everything covered, from static street cameras to highly portable mobile cameras, on-vehicle cameras to on-body cameras. We cover all the angles.

Over the past 25 years, our services have proved vital in helping the police track down missing children, piece together timelines of terrorist outrages, and provide conviction-securing evidence for countless criminal court cases. Whatever you need, we've got the partnerships to deliver it.

Project management

We'll have our hands on every aspect of your surveillance solution: the cameras and peripherals, the control technology, and the networks. We'll project manage the complete installation. And we won't hand it over until we've tested every component and you're satisfied that everything is tip-top.



Training

We'll train your people on how to use everything: cameras, apps, networking, control room software. The whole caboodle.

In-life support

We don't just walk away when we've installed the system and shown you how to use it. We'll manage the system for you, making sure that you're always getting optimum performance.

Helpdesk

From time to time, things may go wrong or you may need help doing something. Whenever you need support, we'll be there. Just call our free 0800 24-hour helpdesk and we'll fix any problems.

Share the infrastructure, shrink the costs

We're now helping local authorities and police forces across the country share control room services, reducing costs while maintaining service quality.

Framework agreements

Procurement is simple and cost-effective with our services being part of the Crown Commercial Services framework agreements.

What can we do for you?

Everything. Call us today on **0800 032 0025** to talk about how we can help connect your surveillance network.

Offices Worldwide

The services described in this publication are subject to availability and may be modified from time to time. Services and equipment are provided subject to British Telecommunications plc's respective standard conditions of contract. Nothing in this publication forms any part of any contract.
© British Telecommunications plc 2019.

Registered office: 81 Newgate Street, London EC1A 7AJ.
Registered in England No. 1800000.