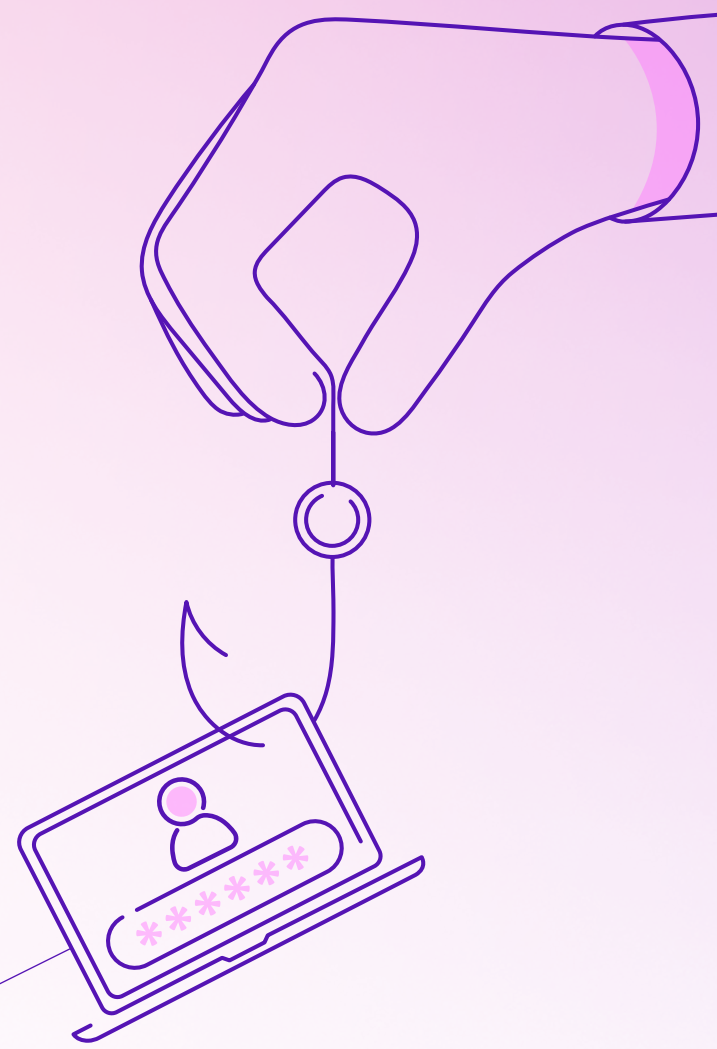


Navigating the cyber security landscape:

Key challenges and priorities

The cyber threat landscape is in a constant state of flux, with attacks of increasing severity targeting businesses of all sizes, across all sectors. Given the complexity at play, we spoke to 1000+ IT and security decision-makers to find out what they think the main cyber security needs, priorities, and challenges of today are.

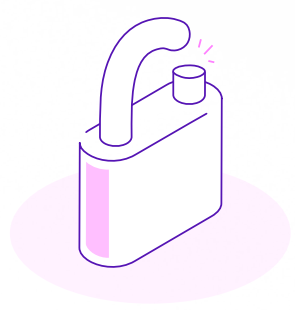
Here's what they said.



Challenges

Our IT and security decision-makers highlighted three main cyber security challenges:

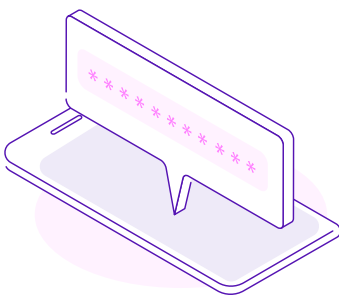
Cyber attacks



40%

said they have experienced a security breach and/or had data compromised in the past 24 months.

Training



61%

agreed that keeping up with cyber security measures is increasingly difficult.

Recruitment



76%

said they find it difficult to recruit or retain trained security staff.

Priorities

Our IT and security decision-makers also highlighted three main priorities:

Automation



52%

have prioritised automating threat detection: freeing up analysts' time and reducing the risk of human error.

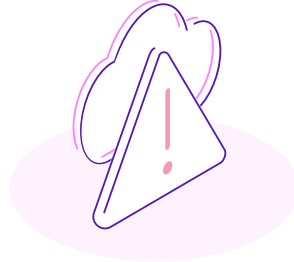
Outsourcing



43%

said they mainly choose a managed security service provider for proactive threat detection and prevention.

Defence



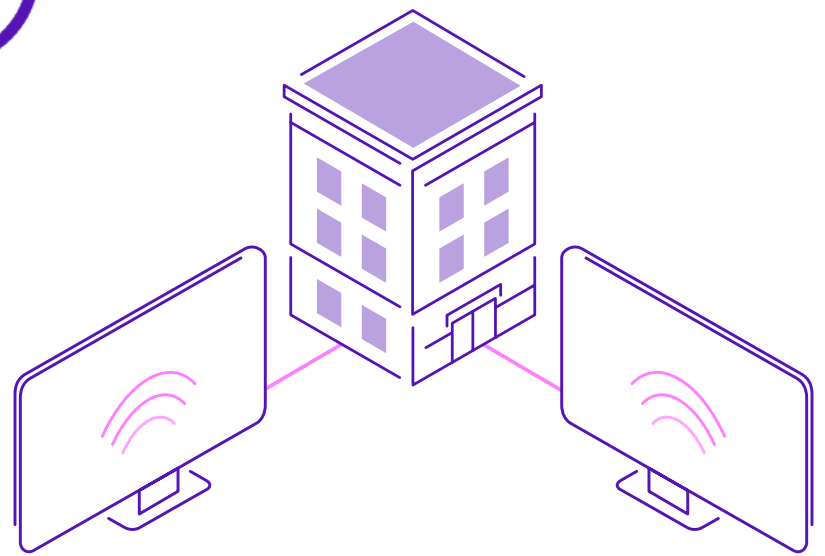
77%

said they want to address the risks associated with cloud adoption, AI, and big data technologies.



Threat management and automation

We can partner with organisations to help them on their cyber security journey. Instead of adding more products to the tech stack, we act as a consolidated provider to help teams manage their data and understand how new security threats might affect their business.



It's not possible to hire the number of people required to review and analyse the abundance of cyber security data out there. With automation and **managed services**, however, it is possible for businesses to prevent cyber attacks, mitigate harm, and stay ahead of the curve.

Understand the threat landscape