

# Getting started with The Digital Carbon Calculator

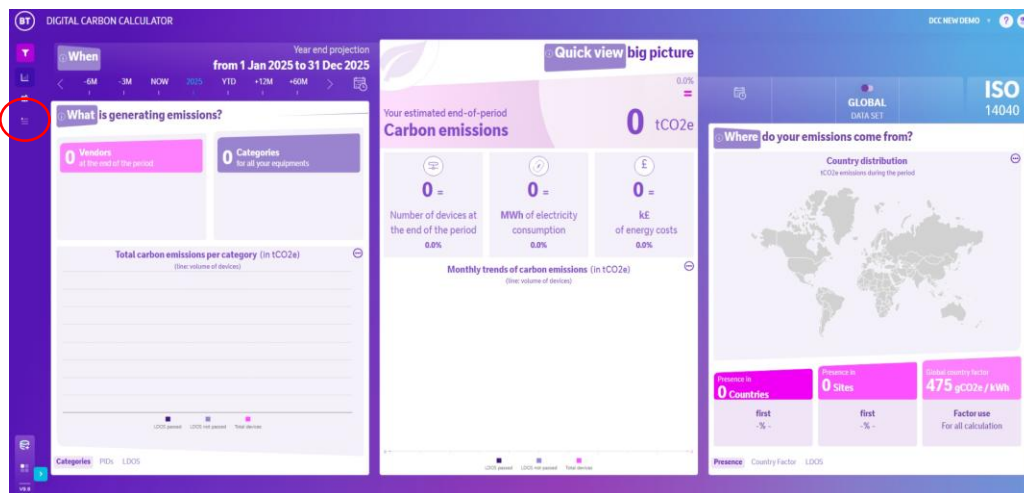


## Digital Carbon Calculator

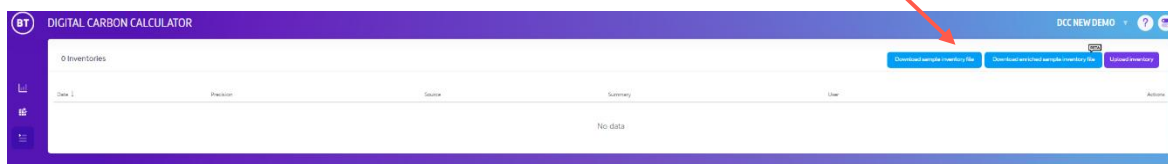
Start your net zero transformation using the Digital Carbon Calculator. With carbon emission and energy consumption estimates for your entire inventory, the Calculator allows you to measure and baseline your IT carbon footprint.

### Setting up the Digital Carbon Calculator

1. Speak with your account team to ensure you have your Digital Carbon Calculator account created, and your access granted. Select the hamburger button on the left toolbar to upload a new inventory.



2. Download and complete the Inventory Template by selecting 'Download sample inventory file' to upload your most recent inventory.

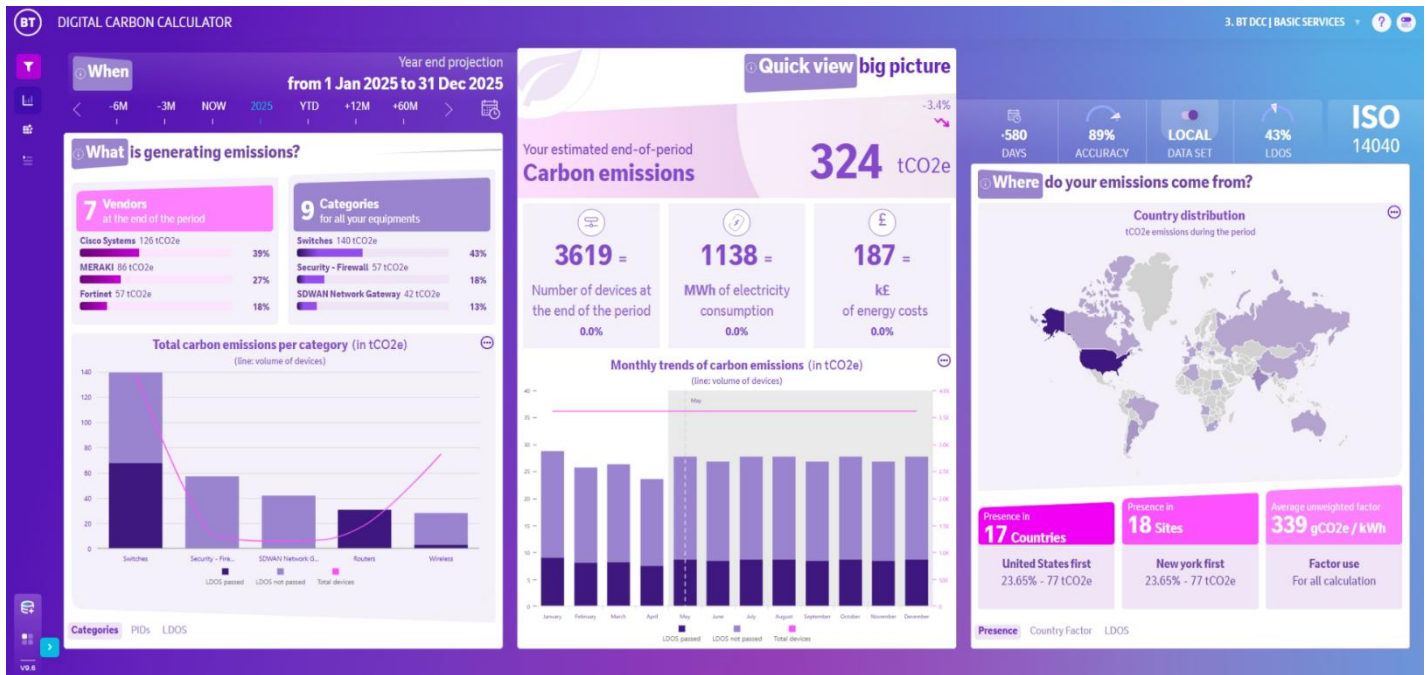


3. Ensure all the necessary columns have been completed. Mandatory columns are marked as such. Once completed, upload your new inventory by selecting 'upload inventory'.

vendor	category	pid	sn	country	site name	quantity
mandatory	mandatory	mandatory		mandatory		mandatory

**Note:** Some steps, screenshots and options may differ slightly depending on the application, browser, operating system and software version you are using.

- Go back to dashboard view to see your most recent CO<sub>2</sub>e and energy consumption baseline.



Once set up, please watch the DCC demo walkthrough, to understand what your results mean, and how you can identify opportunities to reduce both your annual energy consumption and your annual carbon emissions.

## Learn more

- [Visit the Digital Carbon Calculator](#)
- [Learn more about the Digital Carbon Calculator](#)

Discover more at the [BT support centre](#) >



**Note:** Some steps, screenshots and options may differ slightly depending on the application, browser, operating system and software version you are using.