



Managed SD-WAN from BT

Building a future proof network



The future will demand more of your business.

So demand more of your network.

Fast-forward a couple of years. Demand for bandwidth is skyrocketing. Security threats are relentless and getting smarter by the day.

Customer, employee, and visitor expectations are rapidly changing. They're calling the shots, refusing to settle for anything less than what they want.

You need a network that can outsmart any challenge the future throws at you. Your digital workplace and digital transformation need to accelerate now just to keep pace with what's to come.

You need the networking solution that'll help you keep pace with the rapidly changing future of work. You need Managed SD-WAN from BT.



What do we mean by SD-WAN?

A software defined wide area network is much more than just a network solution.

SD-WAN puts you in control

You decide which applications to prioritise, so your critical applications and services get priority. And you'll have real-time views of all your applications, users and devices to optimise business decisions.

SD-WAN helps you adapt to the changing world of work

All businesses evolve; yours is no exception. In a world of change it pays to be agile, flexible and creative. With SD-WAN, you can deploy new applications at scale, support digital workers wherever they may be, and give your customers a better experience, all without straining your network or your people.

SD-WAN unlocks the power of the cloud

You need a solution that unshackles your cloud ambitions, with rapid provisioning and unparalleled security, so you can deliver the best experience for your workforce and customers. With SD-WAN you can extend control, visibility and performance into your cloud environments and applications.

SD-WAN can put you ahead of your competition

- work fast, no matter how many devices are on the go
- see what's happening across your whole network
- dig into the detail, make data-driven decisions
- set up new sites with minimal fuss
- adopt new technologies with confidence
- react fast to cyber threats
- deliver the ultimate customer service across all channels
- support hybrid workers with secure access
- connect to your cloud environments with visibility and control



See everything. Stay secure. Achieve more.

How SD-WAN can transform your business.

Propel your business with insight

Our SD-WAN solution packs a powerful analytics punch.

Analyse your traffic and prioritise how you use it. Make smarter investment decisions. Highlight your pinch points. Capturing application traffic, sensor feedback and device data, our advanced analytics deliver the insights you need to direct your digital transformation and propel your business.

Keep things safe and secure

Respond fast to security risks and automate updates across all sites, devices and platforms. So you're always one step ahead of cyber threats.

We take care of the network, you take care of business

With our fully managed SD-WAN, you'll have a dedicated project management team to get you set up. Then it's over to our UK-based operation centres to keep a proactive eye on your network, giving you support and guidance whenever you need it, 24/7. And as we run a single service desk for all of our solutions, you only need to call one number to reach us.

A network built to compete

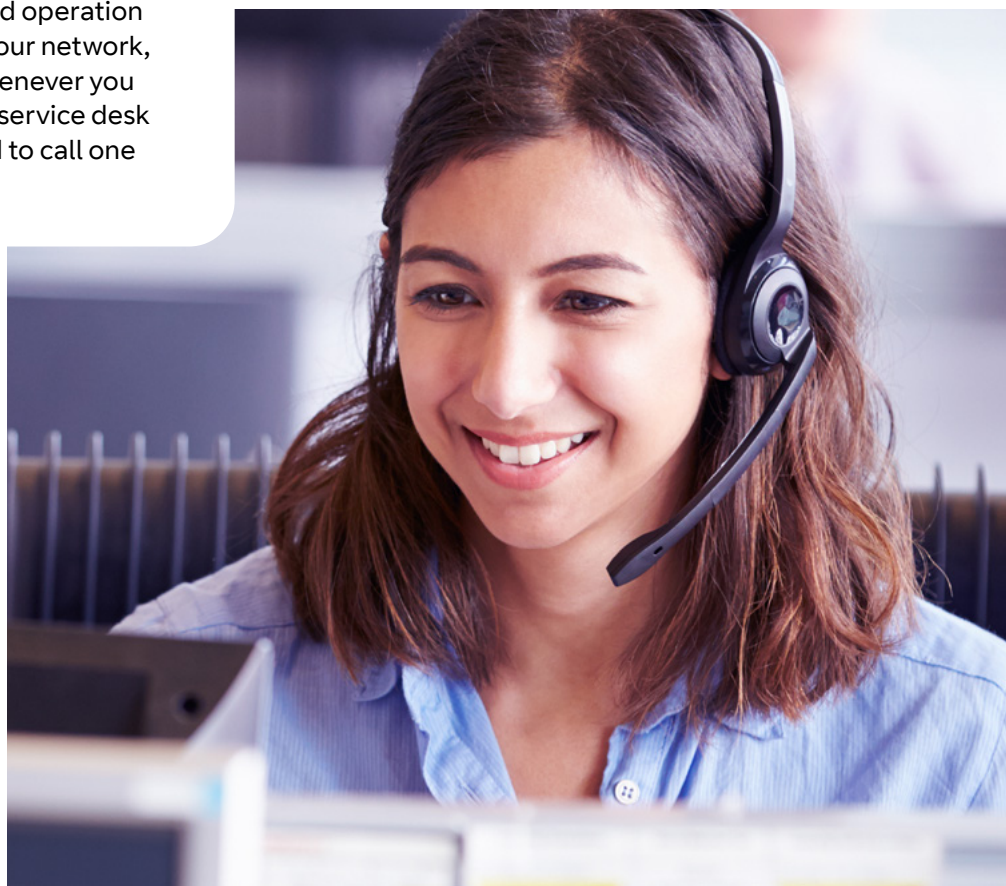
Don't leave speed to the start-ups. Managed SD-WAN will accelerate your digital transformation and help you compete with even the most nimble companies, whatever your size. Set up new sites faster, give your customers a better digital experience, and adopt new cloud technology without fear of your network buckling.

Power to your people

Because your people are using multiple devices and working more flexibly than ever before, your connectivity and security stakes have never been higher. SD-WAN will help you secure access to applications, improve productivity, and create a great experience for your people across your estate, wherever they're working.

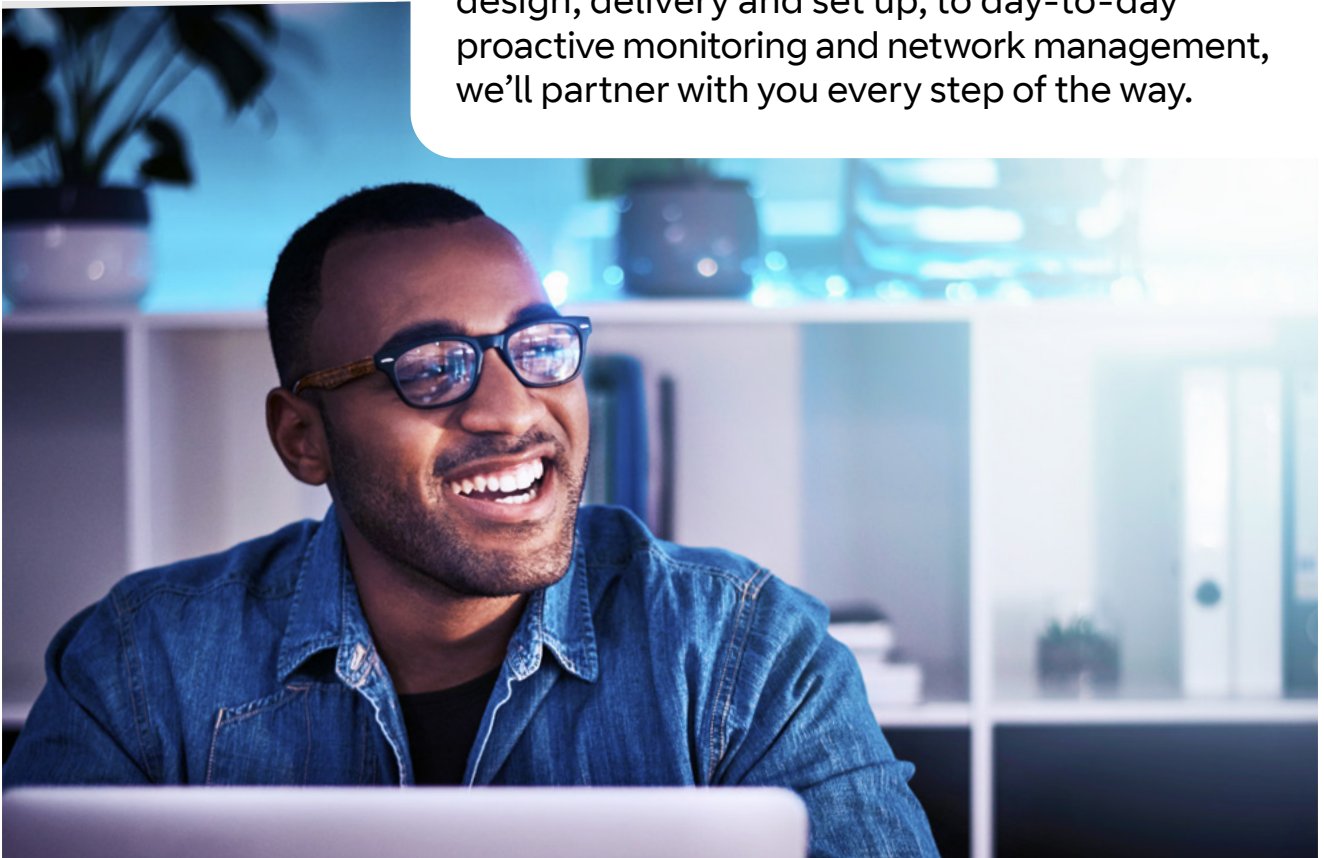
Embrace your cloud

Your business relies on the cloud. With SD-WAN at the heart of your network, you can support new application growth, achieve IT and network agility, simplify operations, and optimise access from branch to the cloud to your SaaS applications. Our partnerships make it quick and easy to optimise access to public clouds like AWS and Azure.



Leave the heavy lifting to us.

We know that all organisations are different. That's why we design our managed service around you, and your individual needs. From solution design, delivery and set up, to day-to-day proactive monitoring and network management, we'll partner with you every step of the way.



A team that runs like clockwork

You'll get a dedicated team with a project manager, getting you what you need on time, on budget, and spreading calm. They'll handle the switch to your new solution. Our UK-based operation centres will be on hand for round-the-clock support. And we'll review your service with you regularly, checking everything's working as promised and helping you plan for the future.

One size never fits all

You might be a manufacturer with 100 people. Or a public sector institution with tens of thousands. Our Managed Services team support over 2,500 businesses of all shapes and sizes. So we've got the experience to tailor every step to you: the set-up, the service you get along the way, and any upgrades or flex you need down the line. All on a model that fits your budget.

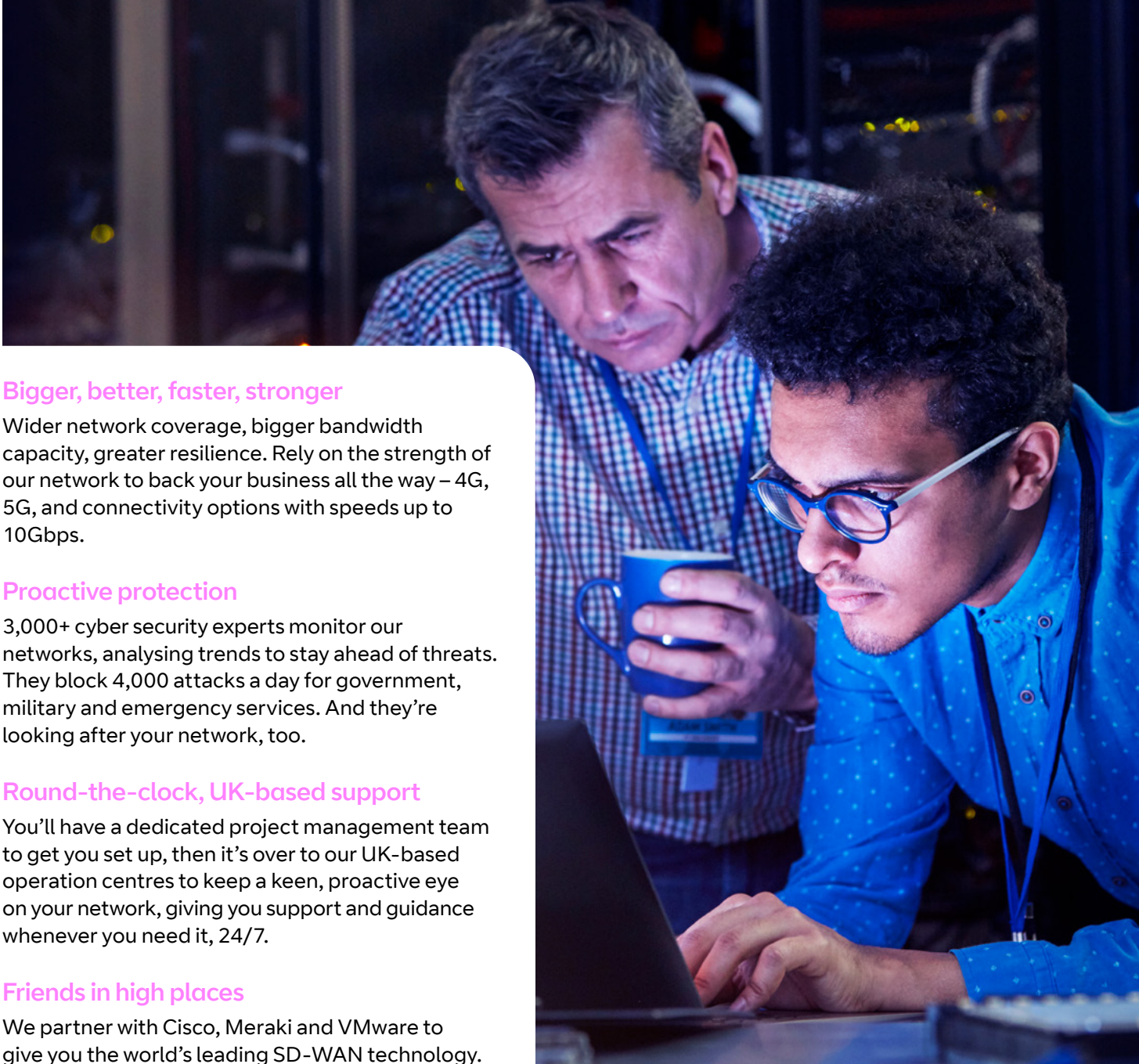
Leave it to the experts

There's no need to invest in building up your own expertise when you can count on ours. Our ITIL-accredited specialists have everything you need: in-depth product knowledge, expert support skills, and the experience to manage a global network. So your people can use their expertise to give your customers the best possible experience.

Stay secure. Stay connected

We'll work closely with you to design a solution that matches your security policies. And we'll help you make sure it's working like it should – with analytics, regular service reviews, and engineers just a call away for first, second or third-line support if you need it.

Why BT?



Bigger, better, faster, stronger

Wider network coverage, bigger bandwidth capacity, greater resilience. Rely on the strength of our network to back your business all the way – 4G, 5G, and connectivity options with speeds up to 10Gbps.

Proactive protection

3,000+ cyber security experts monitor our networks, analysing trends to stay ahead of threats. They block 4,000 attacks a day for government, military and emergency services. And they're looking after your network, too.

Round-the-clock, UK-based support

You'll have a dedicated project management team to get you set up, then it's over to our UK-based operation centres to keep a keen, proactive eye on your network, giving you support and guidance whenever you need it, 24/7.

Friends in high places

We partner with Cisco, Meraki and VMware to give you the world's leading SD-WAN technology. Combine that with the power of our network and people, and you've got the best possible solution for your organisation, however demanding it is.

We're fuelling the future of UK business

We're investing £10 billion in new technologies over the next five years. And that includes world-leading research and innovations in all types of networks and cloud solutions. So whatever's round the corner, we're ready for it.

**Find out more about SD-WAN,
the network for smart businesses**

Visit bt.com/business/intelligentconnectivity

Contact your account manager or call
0800 917 5806 to find out more



Offices worldwide

The services described in this publication are subject to availability and may be modified from time to time. Services and equipment are provided subject to British Telecommunications plc's respective standard conditions of contract. Nothing in this publication forms any part of any contract.

© British Telecommunications plc 2022. Registered office: 1 Braham Street, London E1 8EE. Registered in England No. 1800000.

February 2022