

Measure, monitor and reduce power and carbon emissions across your IT networks

Carbon reduction and renewable energy sources are at the top of boardroom agendas as governments worldwide steadily increase regulation. But you can't achieve net zero in isolation. To reach your sustainability aims, you're going to need to work in collaboration with suppliers and your wider ecosystem. Our Carbon Network Dashboard helps you get there. With it, you can measure, monitor and reduce power and carbon emissions across your IT networks – as well as detecting and reacting to any power use anomalies.

Alongside regulatory pressures, Environment, Social and Governance (ESG) decision-making means investors are divesting from fossil fuel users, while 88% of consumers have doubts about buying from companies that aren't ethically or environmentally sustainable.¹

At the same time, the increase in global energy prices means the pressure's on to find energy efficiency or optimisation solutions that can help drive down costs.

Up against these combined pressures from investors, consumers, supply chain partners and employees, your organisation needs to get a handle on its emissions and set firm sustainability commitments.

CIOs and CTOs play an important role in helping organisations reduce their energy and carbon footprint. Networks and IT infrastructure are notoriously energy-hungry, especially as more organisations look to exploit the benefits of GenAI.

Our Carbon Network Dashboard will help you optimise your network allowing you to:

- calculate your footprint for carbon accounting
- provide you with the insights to help you optimise your networks and workloads for low-carbon operations
- identify and prioritise the replacement of carbon intensive devices.

Get the digital tools you need to drive sustainability

Our Carbon Network Dashboard:

- gives you real-time power consumptions data for network devices
- provides power consumption heat maps and detects anomalies
- overlays regional grid energy mix data for conversion to carbon emissions
- forecasts energy consumption and shortlists the most carbon intensive devices
- provides energy optimisation recommendations and insights
- gives sustainable devices swap out recommendations
- provides Scope 1, Scope 2, and Scope 3 carbon emissions (CO₂e) data for your network devices

More than

5000

of the largest publicly trading companies have set net zero targets²

62%

identify energy efficiency as the current key focus area to reach net zero³

A real-time energy and carbon dashboard for IT networks

Digital technologies have a critical role to play in reducing your carbon emissions and in measuring progress towards net zero – but it's far from easy to measure the environmental impact of your IT services accurately, reliably and consistently. Network design and optimisation is at the heart of what we do. We've leveraged big data to give you value-add insights into how to optimise your networks for low-carbon impact.

Features

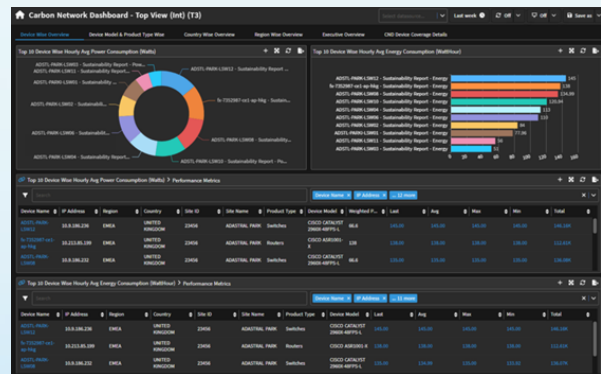
- Provides real-time power, energy and carbon monitoring for networks
- Lets you optimise your networks for low-carbon operations
- Calculates your carbon footprint for carbon accounting
- Run workloads over the network to minimise the carbon impact

How it works

We use Simple Network Management Protocol (SNMP), CLI method and Rest API to extract power data from devices, where possible.

This extraction is completed at regular intervals and then converted into energy, based on device-on time.

This data is then overlaid with regional grid carbon intensity figures to calculate the carbon intensity at a device level.



Why work with us?

We've committed to helping our customers avoid 60m tonnes of CO₂ by 2030.

We have first-hand experience in understanding the carbon footprint of IT services and by working with our partners, we have the ability to collate, and share with you, the data required for carbon footprinting.

As part of a managed service, the dashboard can be used alongside our Digital Carbon Calculator, which measures and reduces carbon emissions across your IT products.

Our global Professional Services team can assess the current and future sustainability footprint across your global infrastructure. This will help you to identify your strategic options and the business case for sustainability change.

We've been recognised, by CPD, as a global leader in managing carbon reduction and climate change across the supply chain.⁴

Since 2016/17, we've reduced the carbon emissions intensity of our operations by 57% and have reduced carbon emissions by 19% in our supply chain.

4. www.cdp.net/en/research/global-reports/global-supply-chain-report-2018

What could our Carbon Network Dashboard do for you?
bt.com/digital-sustainability

Offices worldwide

The services described in this publication are subject to availability and may be modified from time to time. Services and equipment are provided subject to British Telecommunications plc's respective standard conditions of contract. Nothing in this publication forms any part of any contract. © British Telecommunications plc 2024. Registered office: One Braham, Braham Street, London, England E1 8EE. Registered in England No: 1800000.