



Ultra Full Fibre 500 and 900

Self-serve
installation instruction

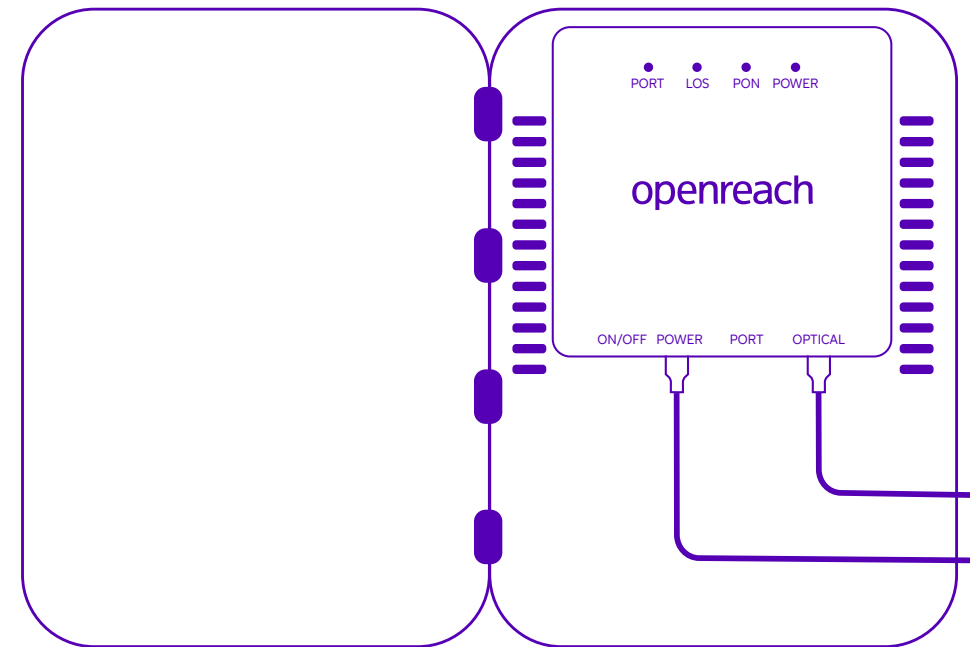
Secure

Let's
get started

First steps:

Before installing your Cisco Meraki equipment, please check the following:

- **Upgrading from existing BT Full Fibre to Ultra?**
Make sure the Openreach Network Termination Unit (ONT) is located right next to where you want to install the Cisco Meraki MX75.
- **New BT Full Fibre installation?**
Ensure the Openreach engineer installs the ONT right next to where you want to locate the Cisco Meraki MX75. Before the Openreach engineer leaves, ask them to confirm that the service is live.
- **Service not yet live?**
The Cisco Meraki MX75 won't be able to connect to its cloud management system until the internet is active.
- **ONT installed in the wrong location?**
If the ONT isn't near where you plan to place the Cisco Meraki equipment, please contact our help desk team.



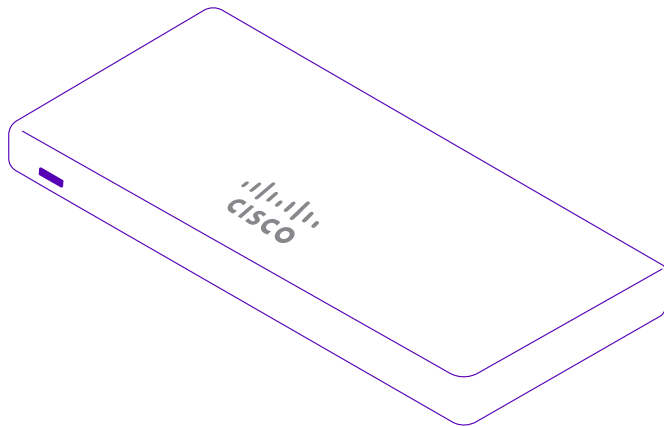
Optical Network
Terminator (ONT)

If you already have an Openreach ONT, it may look slightly different from the example shown.

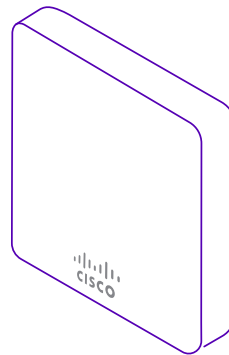
Without the Cisco Meraki equipment connected, you should see:

- Cables plugged into the power and optical ports.
- Power and PON lights showing solid green.

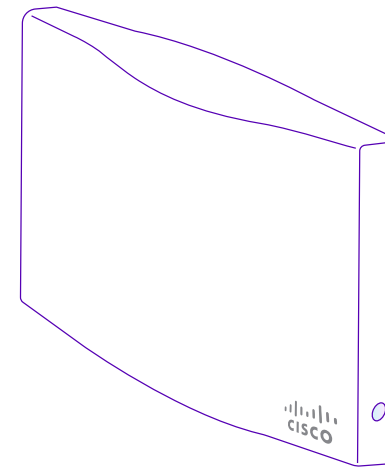
Here are the devices you should have received:



Meraki MX75
security appliance



Meraki MG41
cellular gateway



Meraki MR36
Wi-Fi access point

This is all you'll need to get your BT Business Ultra Broadband service set up once your broadband line is ready.

Please note: if you already have an existing broadband hub, you'll need to switch it off and unplug it before setting up your new equipment.

Cables, connectors and accessories checklist:

Meraki MX75 security appliance

- 1x power adapter.

Meraki MG41 cellular gateway

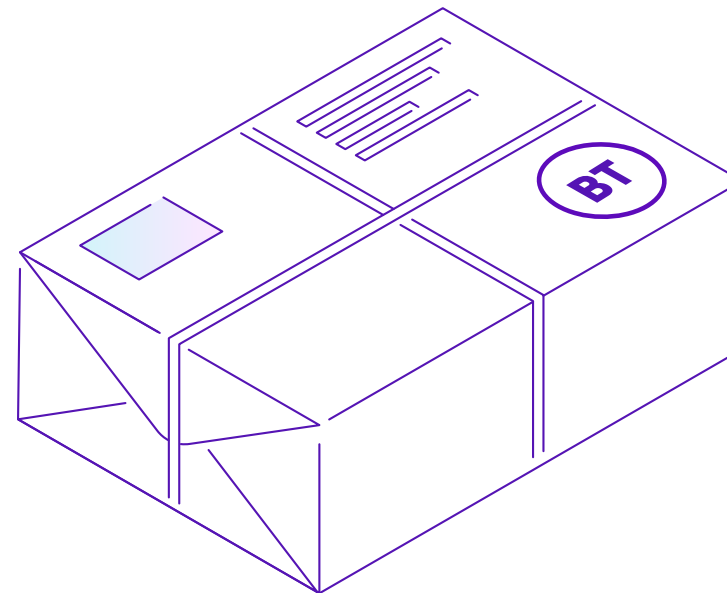
- 1x mount plate.
- 1x mount kit (includes wall screws).

Meraki MR36 Wi-Fi access point

- 1x mount plate.
- 1x mount kit (includes wall screws).

Miscellaneous

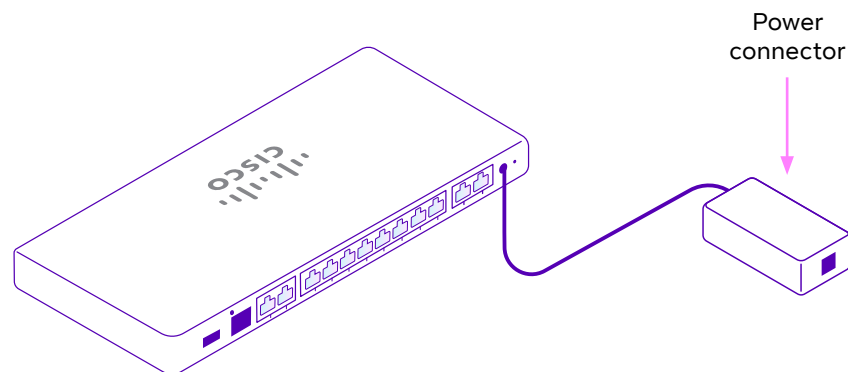
- 1x UK power cable (for MX75).
- 1x power adapter (for MR36).
- 2x CAT5e ethernet cable (10 metre, for connecting MR36 to MX75 and connecting the MG41 to the MX75).



Part one:

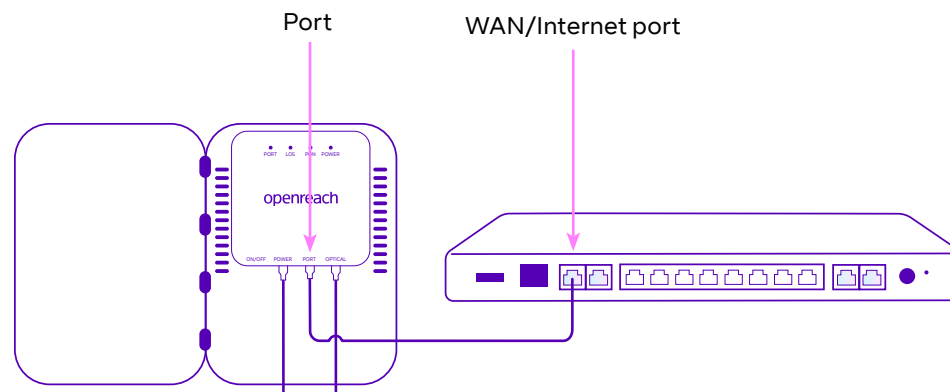
1. Set up and connect your security appliance

Plug one end of the UK power cable into the power adaptor and the other end into the power connector at the back of the security appliance. Then plug one of the UK power cables into the power adaptor, plug it into the wall, and switch the plug on.



2. Connect your security appliance to the Openreach ONT




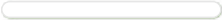

Using the black ethernet cable, connect the WAN/Internet port on the security appliance into the ethernet port on the Openreach ONT.



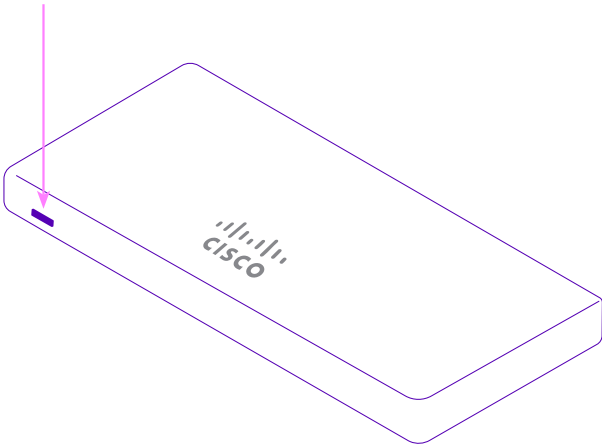
3. Wait for the white light on the security appliance



Once powered up and connected, the security appliance will take 10 to 15 minutes to connect and update to the latest firmware. It will display a solid white LED status once it's fully operational. The following table lists other LED statuses that the security appliance might display during set up or operation.

LED Status		Meaning
Solid orange		Power is applied but the appliance is not connected to the Meraki dashboard.
Rainbow colours:		The appliance is attempting to connect to Meraki dashboard.
Flashing white		Firmware upgrade in progress.
Solid white		Fully operational/connected, uplink actively using wired WAN.
Solid purple		Fully operational/connected, uplink actively using integrated cellular failover.

LED indicator

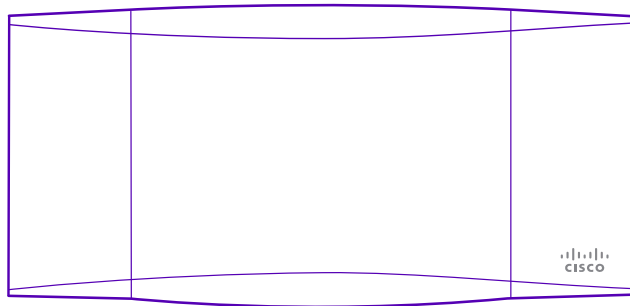


Part two:

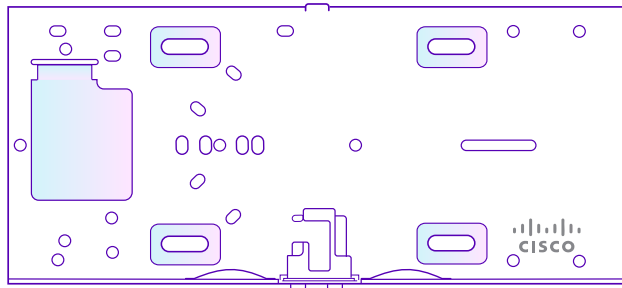
1. Set up your Wi-Fi access point

Remove the mounting plate on the back of the Wi-Fi access point to expose the cable access bay.

Meraki MR36 Wi-Fi access point



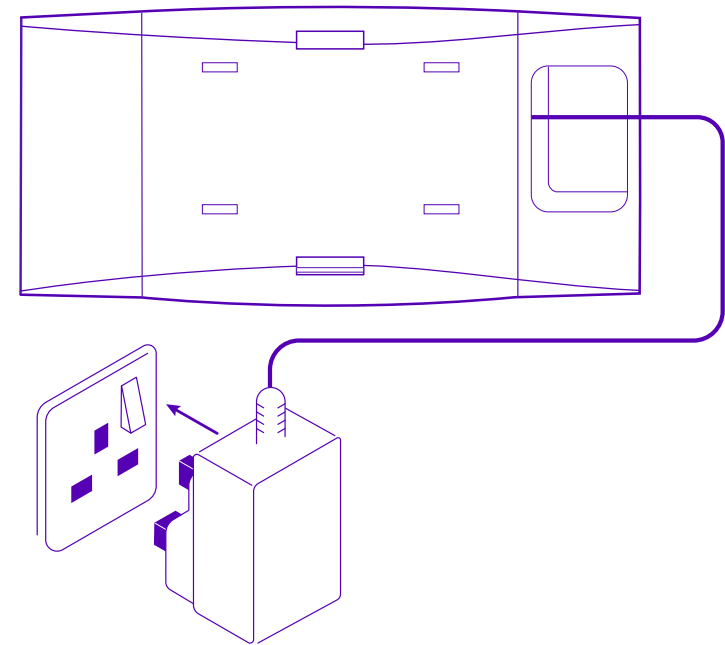
Mount plate



2. Plug the MR36 power adaptor into the Wi-Fi access point and power up

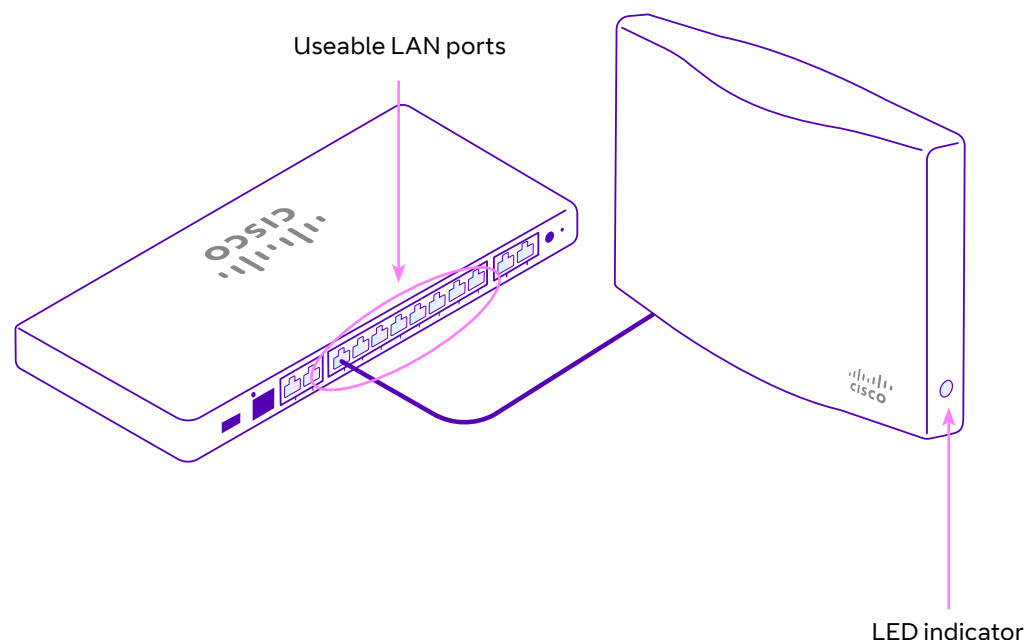
Plug the MR36 UK power adaptor into the Wi-Fi access point and switch the plug on. The MR36 access point will begin to power up.

You may wish to install the Wi-Fi access point using the mounting plate provided, but you can leave this for your BT Expert Setup engineer to complete at your chosen appointment.



3. Connect the 10 metre ethernet cable to the Wi-Fi access point

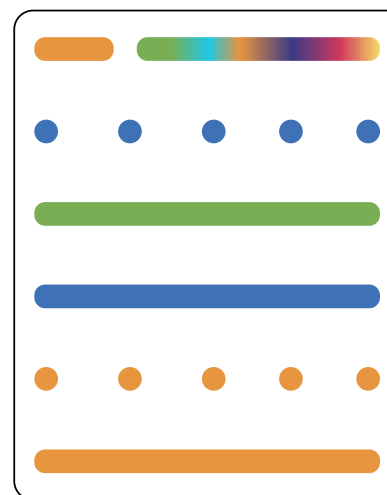
Insert one end of the 10 metre ethernet cable into the Wi-Fi access point and the other to the security appliance using one of the useable LAN ports on the back.



4. Now, wait for the green light on the Wi-Fi access point

Now that the Wi-Fi access point is powered on and connected, you can monitor its installation via the LED in the bottom right-hand corner. The LED will turn solid green to show it is ready for connections. This should only take a few minutes.

LED Status



The Wi-Fi access point's LED conveys information about system functionality and performance.

Here's a short guide for you to refer to:

Rainbow – AP (access point) is initialising/ scanning.

Blinking blue – AP is upgrading

Blue – AP is operational and has clients connected.

Green – AP is operational but with no clients connected.

Blinking orange – AP has a connection problem.

Orange – AP is booting (permanent orange suggests a hardware issue).

Part three:

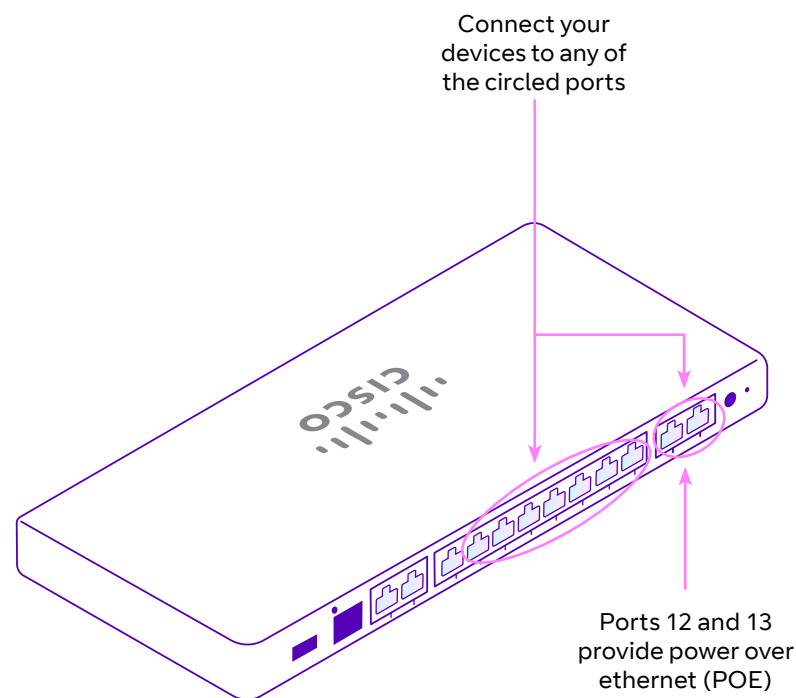
Connect your wireless devices

1. The Wi-Fi network **BTUltraBroadband** should now show as an available network on any wireless device you want to connect – including mobiles, tablets, or laptops.
2. The password for this network is the serial number on the bottom of your security router.
3. Once you've entered this password, you should be connected to your new BT Business Ultra Broadband network.



Connect your wired devices

If you have wired devices, such as computers, printers, or an existing network switch, you can connect these to the remaining three LAN ports on the security appliance.



Part four:

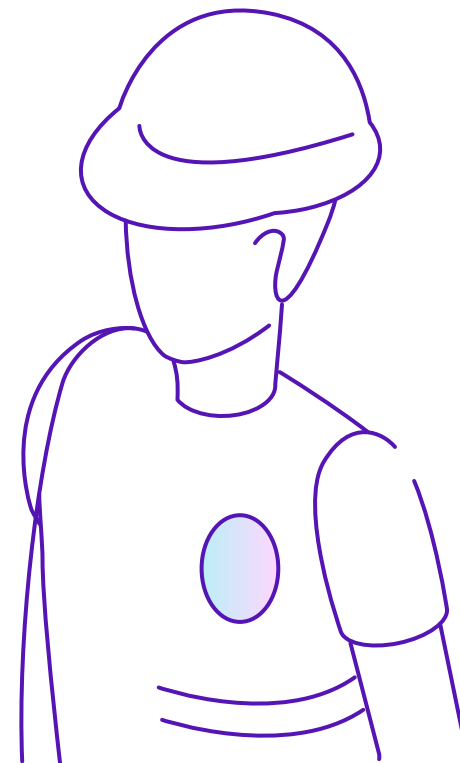
Tailoring your network with an Expert Setup appointment

Following your broadband installation, you'll receive a visit from one of our Expert Setup engineers. They'll help you complete the configuration of your Ultra service and complete the set up on your behalf. This service is included in your package – it won't cost you a penny.

Our engineers can help with things like:

- Installing up to two additional access points.
- Updating your Wi-Fi network name and password.
- Setting up Guest Wi-Fi, if you want this feature.
- Install the MG41 4G backup gateway.
- Testing the 4G backup failover and failback operation.
- Modifying the initial IP address schema of the internal DHCP server to include reserve addressing and support for static IP addresses for LAN devices such as printers.

If you need to reschedule your visit,
call 0800 800 0152 / 154





Offices worldwide

© British Telecommunications plc 2025

Any services described in this publication are subject to availability and may be modified from time to time. Services and equipment are provided subject to British Telecommunications plc's respective standard conditions of contract. Nothing in this publication forms any part of any contract.

Registered office: 1 Braham Street, London, E1 8EE.

Registered in England No. 1800000

June 2025

JN: 1984813681