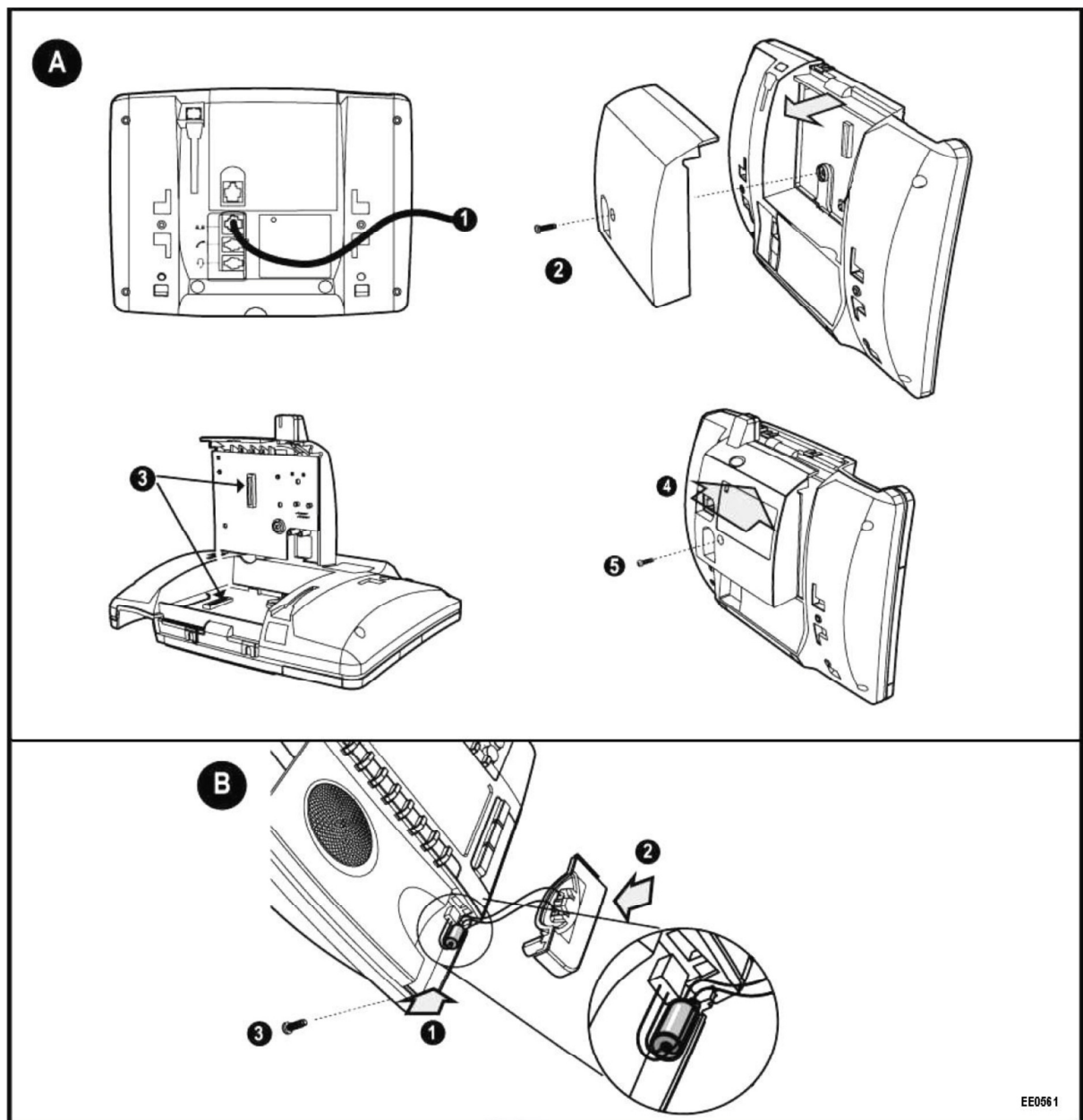


BT Quantum Bluetooth Module

Installation for the 5330 or 5360 IP Phone

Note: For the 5360 IP Phone the jacks in the diagrams below are oriented horizontally.



Important Safety Instructions and Precautions

WARNING: DO NOT CONNECT DIRECTLY TO THE PUBLIC SWITCHED TELEPHONE NETWORK (PSTN). ANY CONNECTION OF THIS UNIT TO AN OFF-PREMISE APPLICATION, AN OUT-OF-PLANT APPLICATION, ANY OTHER EXPOSED PLANT APPLICATION, OR TO ANY EQUIPMENT OTHER THAN THE INTENDED APPLICATION MAY RESULT IN A SAFETY HAZARD, AND/OR DEFECTIVE OPERATION, AND/OR EQUIPMENT DAMAGE. AN "EXPOSED PLANT" IS WHERE ANY PORTION OF THE CIRCUIT IS SUBJECT TO ACCIDENTAL CONTACT WITH ELECTRIC LIGHTING OR POWER CONDUCTORS OPERATING AT A VOLTAGE EXCEEDING 300V BETWEEN CONDUCTORS OR IS SUBJECT TO LIGHTNING STRIKES.

WARNING : Users are not permitted to make changes or modify the device in any way. Changes or modifications not expressly approved may void the user's right to operate the equipment. When using your phone and Bluetooth accessories basic safety precautions should always be followed to reduce the risk of fire, electric shock and injury to persons, including the following:

- Do not use the product near water, for example, near a bath tub, wash bowl, kitchen sink or laundry tub, in a wet basement or near a swimming pool.
- Avoid exposing the product to rain or other liquids.
- Do not use the phone and Bluetooth accessories to report a gas leak in the vicinity of a leak.


Maintenance and Repair: There are no user serviceable parts inside these units.

CAUTION: Installation of Modules shall only be performed by BT-qualified personnel.

These notices may appear on the product or in the technical documentation.

DANGER	Danger indicates an imminently hazardous situation which, if not avoided, will result in death or serious injury.
WARNING	Warning indicates a potentially hazardous situation which, if not avoided, could result in death or serious injury.
CAUTION	Caution indicates a potentially hazardous situation which, if not avoided, may result in minor or moderate injury and/or damage to the equipment or property.

This symbol may appear on the product.

	The exclamation point within an equilateral triangle indicates that important operating and maintenance (servicing) instructions are included in the literature accompanying the product
--	--

Safety Instructions for the Bluetooth Handset

WARNING : THE BLUETOOTH HANDSET CONTAINS A BATTERY. CHARGE ONLY WITH SPECIFIED CHARGERS ACCORDING TO MANUFACTURER'S INSTRUCTIONS. DO NOT OPEN THE HANDSET, DISPOSE OF IN FIRE, OR SHORT CIRCUIT – MAY IGNITE, EXPLODE, LEAK, OR GET HOT CAUSING PERSONAL INJURY.

CAUTION: The battery in the Bluetooth Handset can explode, leak or catch fire if exposed to high temperatures or fire, opened, or disassembled.

CAUTION: If fire or explosion occurs when the Bluetooth Handset is on charge, shut off power to the IP phone, flood the area with water. LITH-X or copper powder fire extinguishers, sand, dry ground dolomite or soda ash may also be used.

Description

The Bluetooth Module connects to a 5330/5360 IP Phone to enable adding

- A Bluetooth Cordless Handset and Charging Plate
- A 3rd-party Bluetooth headset

The 5330/5360 IP Phones are LAN-powered. They supply power to the Bluetooth Module and also provide power to charge the Bluetooth handset.

NOTE: The Bluetooth Module cannot be installed on a phone set that has a Line Interface Module, IP PKM Module, or 5310 Conference Unit installed.

NOTE: For best performance it is recommended that the Bluetooth handset and headset be used within your office or adjacent offices. (Maximum transmission distances may vary depending on building construction.)

Installation Instructions

Attaching the Bluetooth Module to the 5330/5360 IP Phone (see Figure A)

1. Disconnect the LAN power supply cable from the back of the phone.

CAUTION: Attempting to remove the backplate from the phone before disconnecting the phone's power supply may damage the phone.

2. Remove the screw from the backplate on the back of the phone. Keep the screw in a safe place—you must use the same screw in step 5.
3. Align the Bluetooth Module in vertical position against the phone and ensure that the connector on the module aligns with the connector on the main board of the 5330/5360 phone.
4. Press forward and down firmly until the Bluetooth Module snaps into place.
5. Using the same screw that you removed from the phone in step 2, screw the Bluetooth Module to the back of the phone.

CAUTION: The screw provided with the phone is sized so that it does not damage the interior mechanisms of the phone. Using any other screw to attach the module may damage the phone. If you are connecting a handset do not connect the power at this point. Proceed with the following instructions:

Attaching the Bluetooth Handset and Charging Plate to the 5330/5360 IP Phone (See Figure B)

- Disconnect the LAN power supply cable from the back of the phone if you have not already done so. Detach the corded handset from the phone if installed.

- Remove the cover on the front of the phone at the bottom of the handset cradle by removing the retaining screw inserted from the back of the phone. Keep the screw in a safe place—you must re-use this screw.

1. Bring the new charging cover to the phone and plug the power jumper cable into the connector in the phone.
2. Insert the lip on the right side of the cover into the slot on the phone and snap the cover into place.
3. Using the same screw that you removed from the phone in an earlier step, screw the cover to the back of the phone. Place the Bluetooth Handset in the phone cradle.
4. Reconnect to the power supply by plugging the LAN cable into the LAN port on the back of the phone. Remember to thread the LAN plug through the slot on the phone's base unit, so that the base unit sits level.
5. Place the Bluetooth handset in the handset charging cradle to take it out from the battery saving mode. The LED should turn either solid green or flashing green depending on the status of the battery. It may take approximately 2 hours of charging before the green LED turns on and starts flashing.

Pair the Bluetooth Handset with the Bluetooth Module:

- a. Ensure that the battery of the Bluetooth Handset is at least partially charged.
- b. Press and hold down the pairing button on the back of the Bluetooth Module for approximately 5 seconds until the LED flashes in blue. The Bluetooth pairing window appears.
- c. Press and hold down the hookswitch key on the Bluetooth Handset for approximately 5 seconds until the LED flashes in blue. The pairing confirmation window displays on the IP Phone with the Bluetooth Handset name.
- d. Press **Yes** to confirm pairing. A Pairing Passcode window displays on the IP Phone.
- e. Passcode 0000 displays on the Pairing Passcode window. Press **OK**.
- f. Pairing in progress, please wait... prompt appears in the pairing window. The LED on the Bluetooth Module turns solid for 2 seconds and then turns off when the handset is paired. The pairing status window displays the Bluetooth Handset with the battery status icon.
- g. Press **Close** to exit the pairing application.

NOTE: The Bluetooth Handset must be fully charged before use. This will typically take 3 hours. A new, fully-charged handset battery has a talk time of 6 hours.

Pairing a Bluetooth Headset Device

NOTE: 3rd-party Bluetooth headset devices do not physically attach to a 5330/5360 IP Phone, nor can they be powered by the phone. Follow the Bluetooth headset manufacturer's instructions for pairing the device.

1. Ensure that the battery of the Bluetooth Headset Device is at least partially charged.
2. Press and hold down the pairing button on the back of the Bluetooth Module for approximately 5 seconds until the LED flashes in blue. The Bluetooth pairing window appears. Put the Bluetooth headset into pairing mode following the headset manufacturer's instructions.
3. The pairing confirmation window on the IP Phone appears, displaying the product name for the device to be paired.
4. Press Yes to confirm pairing. A "Pairing Passcode" window displays on the IP Phone.
5. Enter a valid passcode (default = 0000) using the dial pad (or keyboard on the 5360 IP Phone). Press OK. An "Auto Connect" window displays on the IP Phone.
6. Press Yes if the phone will not be shared with other users; press No if the phone will be shared with other users and multiple headsets.
7. Pairing in progress, please wait... prompt appears in the pairing window. The LED on the Bluetooth Module turns solid for 2 seconds and then turns off when the headset is paired. The headset name appears in the pairing window.
8. Press Close to exit the pairing application.



Offices Worldwide

The telecommunications services described in this publication are subject to availability and may be modified from time to time. Services and equipment are provided subject to British Telecommunications plc's respective standard conditions of contract. Nothing in this publication forms any part of any contract.

© British Telecommunications plc 2011.

Registered Office: 81 Newgate Street, London EC1A 7AJ.

Registered in England No: 1800000.

Produced by BT Business Information Systems Marketing



The CE Marking on this equipment indicates Compliance with the following

This device conforms to Directive 1999/5/EC on Radio Equipment and Telecommunications Terminal Equipment as adopted by the European Parliament And Of The Council